



Remote

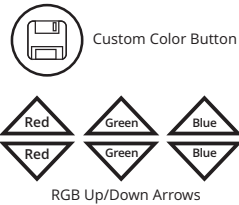
- Adjust brightness
- Adjust speed
- Cycle through colors
- FadeS into the next color



Custom Colors

Create and save custom colors.

1. Press any  Button.
2. Use the  adjust each primary color.
3. Custom colors will automatically save and can be readjusted.



Expandable up to 16ft Connect & Glow.

Maximize your lighting experience with additional strips.
No cutting required. Just connect and light.

ProjectPak™ Compatible

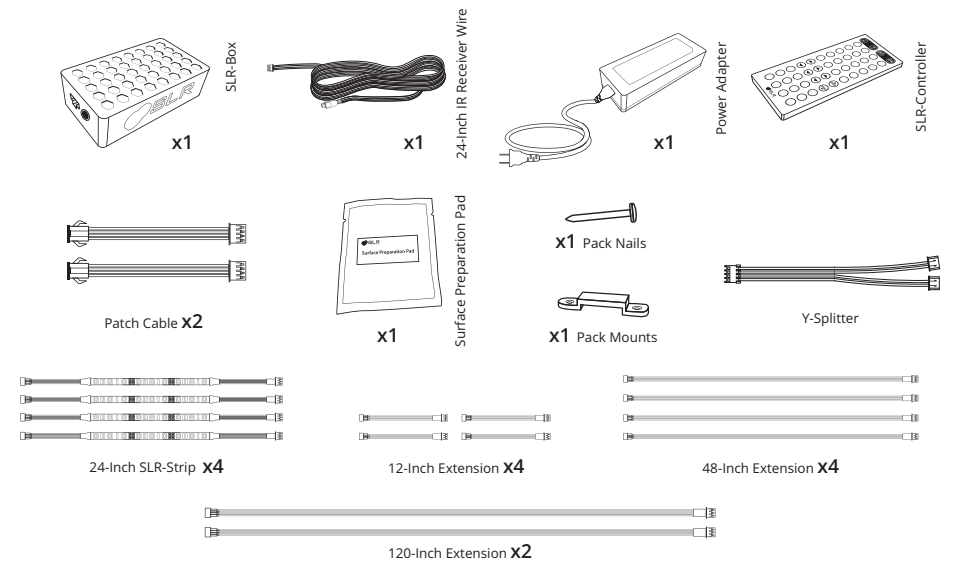
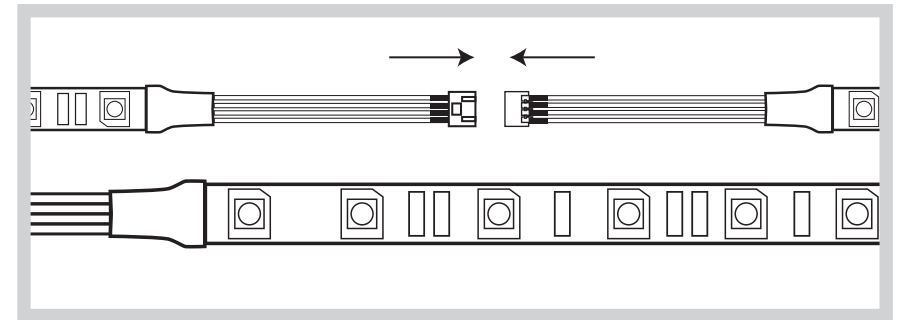
Each ColorConnect kit can be cut, extended, expanded and adapted for complete customization. SLR ProjectPaks are project specific kits that include additional parts and accessories to simplify these projects. The included detailed guide helps you complete the project cleanly and quickly.

Popular ProjectPaks :

- Over/Under Cabinet ProjectPak with Motion Sensor
- Inner-Cabinet ProjectPak with Motion Sensor
- Bed-Frame ProjectPak with Motion Sensor
- TV Backlight ProjectPak
- Cube Organizer Shelf ProjectPak
- Bathroom ProjectPak

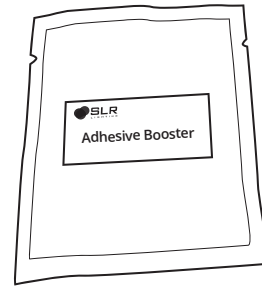
LED HOME COLORCONNECT

24-Inch Premium Kit



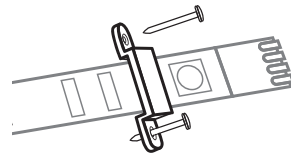
Prep

1. Test multiple lighting locations using masking tape to hold SLR-Strips in place.
2. Clean surface for secure mounting and allow time to dry.
3. Apply the SLR-Adhesive Booster onto the mounting surface and allow time to fully dry.

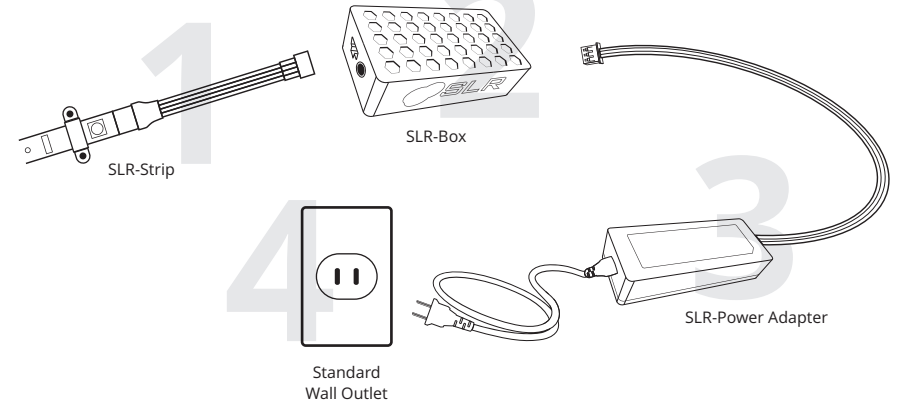


Mounting

1. Peel off tape backing to expose the tape. Avoid touching the adhesive side of the tape to ensure maximum bonding.
2. Starting from one end of the SLR-Strips, begin sticking the SLR-Strips in place. Ensure the SLR-Strip is completely flush with the surface and that there are no gaps.
3. Firmly press and hold the SLR-Strips to the surface with your fingers for about 10 seconds at every inch. This will allow the SLR-Adhesive Booster and SLR-Strips to securely adhere to each other for long-lasting use.
4. For mounting on wood or drywall surfaces, use the SLR-Mounts to permanently secure the SLR-Strips in place. This step is optional, but recommended for cabinetry and outdoor usage.



Connecting



IR Receiver Cable

1. Connect IR cable to the SLR-Box.
2. Run the IR cable to an open area that faces the center of the room.
3. Use tape (not included) to secure the IR cable receiver end so that it faces the center of the room. The IR receiver must have a direct line of sight of the SLR-Controller to function properly.

